

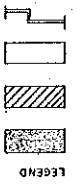
C.V. IV

DIVIDING WALLS - SEPARATING ADJACENT UNITS ARE LIMITED COMMON ELEMENTS RESERVED FOR THE EXCLUSIVE USE OF THE UNITS SEPARATED BY THE DIVIDING WALL

LIMITED COMMON ELEMENTS

COMMON ELEMENTS

THE UNIT



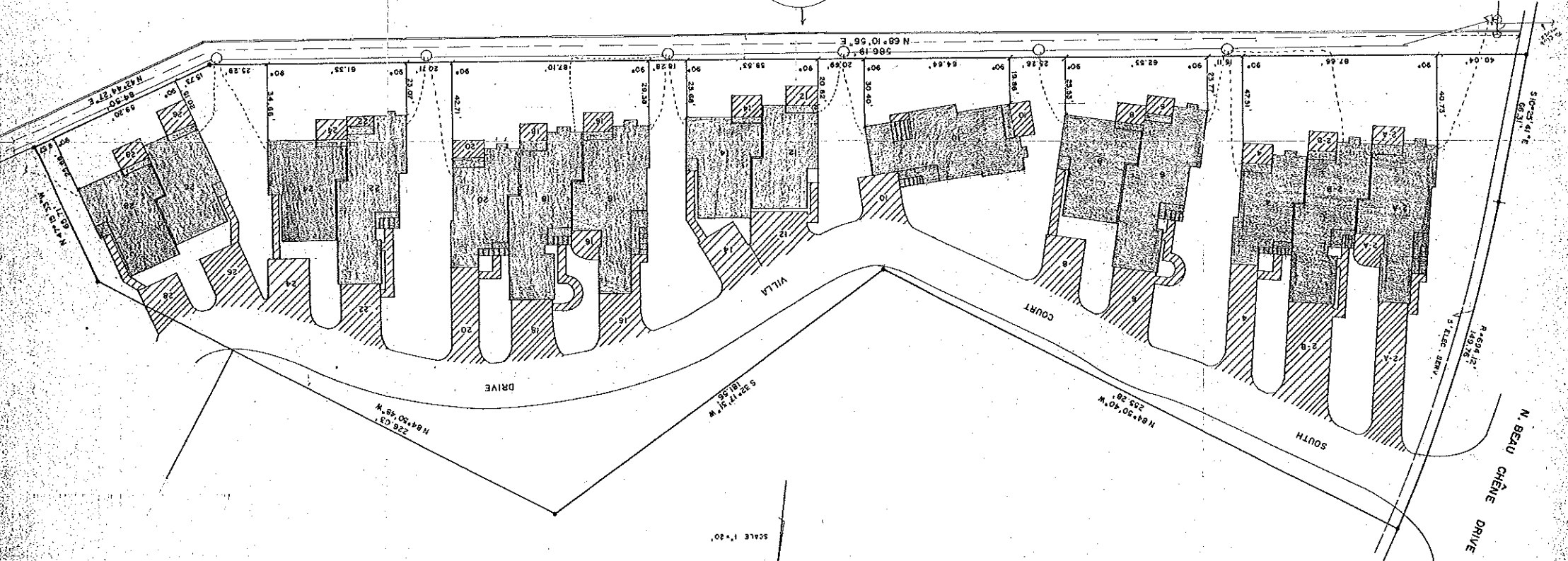
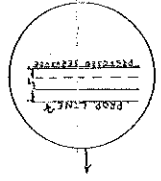
PEDESTAL  
AMPLIFIER  
500 CALF  
750 CALF  
5' RIGHT OF WAY  
DUTY DROP (ARROWS)  
CIVIL NOT DRAWN TO SCALE



ROBERT E. OSWALD, INC.  
REGISTERED LAND SURVEYOR  
Robert E. Oswald  
FEB. 23, 1978

NEW ORLEANS, LA. SURVEYED & CERTIFIED CORRECT TO BEAU CHENE INC.

PLAT PLAN OF COURT VILLAS NO. 1, "A CONDOMINIUM" BEING ALL OF PARCEL 8C-1, SECTION ONE, BEAU CHENE SUBDIVISION, ST. TAMMANY PARISH, LA., IN ACCORDANCE WITH PLAN OF WALDEMAR S. NELSON & CO. DATED 11/1/76, FILED OF RECORD 2/3/77 IN ST. TAMMANY PARISH RECORDS, MAP FILE NO. 504-A. THE PLAN SHOWS EACH UNIT AND THE COMMON ELEMENTS AND THEIR RELATIVE LOCATION. SEE ATTACHED SHEETS 1 THRU 11 FOR DIMENSIONS OF EACH UNIT. THE INDICATION OF THE STREETS AND ROADWAYS ON THIS PLAT IS NOT INTENDED AS A DEDICATION TO THE PARISH OF ST. TAMMANY, THE STATE OF LOUISIANA OR THE PUBLIC IN GENERAL.



BEAU CHENE SUBD.  
(SECTION ONE)  
ST. TAMMANY PARISH, LA.

SCALE 1"=20'