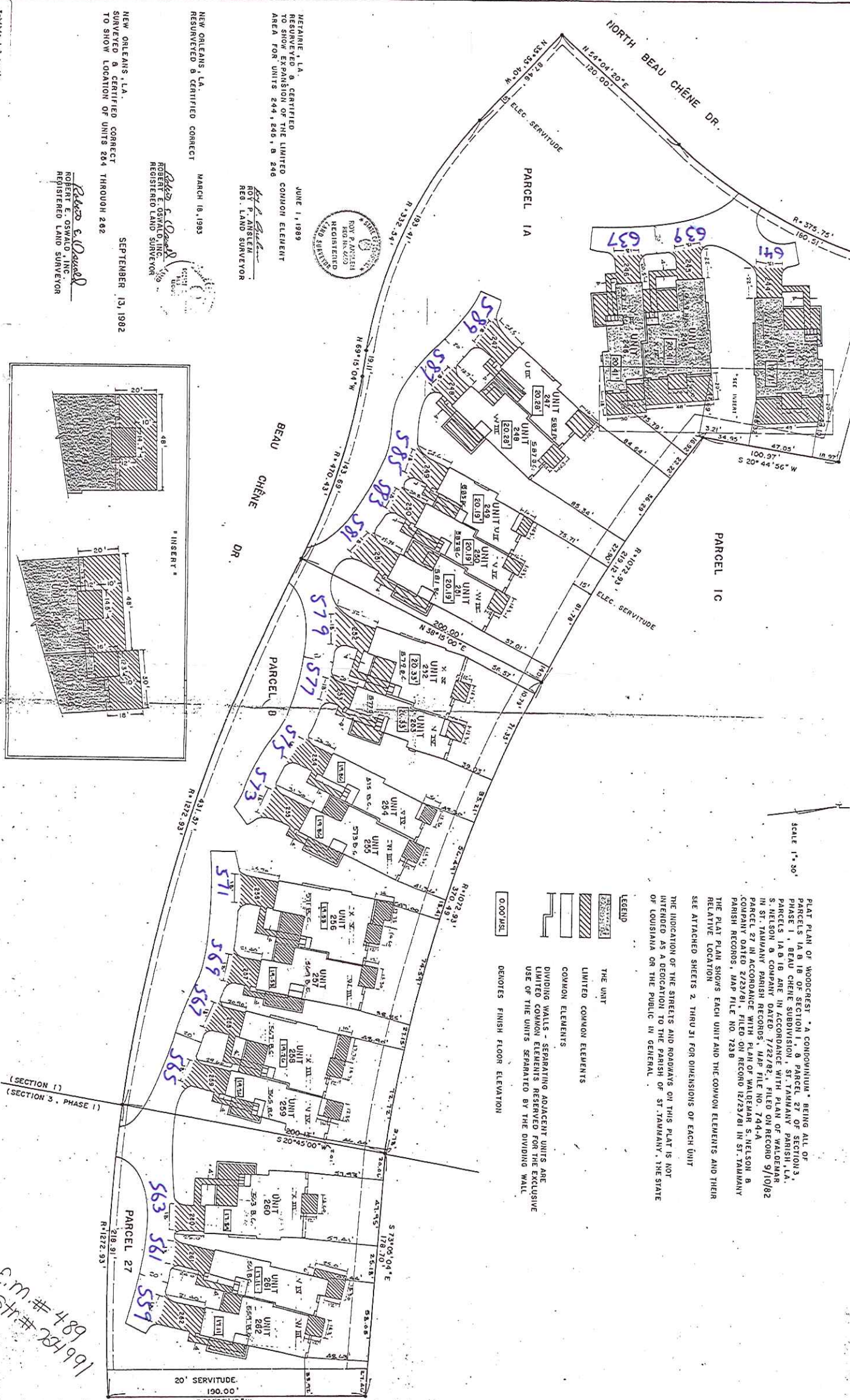


BEAU CHÉNE SUBD.  
ST. TAMMANY PARISH, LA.



PLAT PLAN OF WOODCREST "A CONDOMINIUM" BEING ALL OF PARCELS 1A, B, C OF SECTION 1, & PARCEL 27 OF SECTION 3, PHASE 1, BEAU CHÉNE SUBDIVISION, ST. TAMMANY PARISH, LA. PARCELS 1A, B, C ARE IN ACCORDANCE WITH PLAN OF WALDEMAR S. NELSON & COMPANY DATED 7/22/82, FILED ON RECORD 9/10/82 IN ST. TAMMANY PARISH RECORDS, MAP FILE NO. 744-A. PARCEL 27 IN ACCORDANCE WITH PLAN OF WALDEMAR S. NELSON & COMPANY DATED 2/23/81, FILED ON RECORD 12/23/81 IN ST. TAMMANY PARISH RECORDS, MAP FILE NO. 723B.

THE PLAT PLAN SHOWS EACH UNIT AND THE COMMON ELEMENTS AND THEIR RELATIVE LOCATION.

SEE ATTACHED SHEETS 2, 3 THRU 31 FOR DIMENSIONS OF EACH UNIT.

THE INDICATION OF THE STREETS AND ROADWAYS ON THIS PLAT IS NOT INTENDED AS A DEDICATION TO THE PARISH OF ST. TAMMANY, THE STATE OF LOUISIANA OR THE PUBLIC IN GENERAL.

- LEGEND**
- THE UNIT
  - LIMITED COMMON ELEMENTS
  - COMMON ELEMENTS
  - DIVIDING WALLS - SEPARATING ADJACENT UNITS ARE LIMITED COMMON ELEMENTS RESERVED FOR THE EXCLUSIVE USE OF THE UNITS SEPARATED BY THE DIVIDING WALL.
  - DENOTES FINISH FLOOR ELEVATION

NEW ORLEANS, LA.  
RESURVEYED & CERTIFIED CORRECT  
TO SHOW EXPANSION OF THE LIMITED COMMON ELEMENT AREA FOR UNITS 244, 245, & 246

JUNE 11, 1989

ROY P. ANSTER  
REGISTERED LAND SURVEYOR

NEW ORLEANS, LA.  
RESURVEYED & CERTIFIED CORRECT

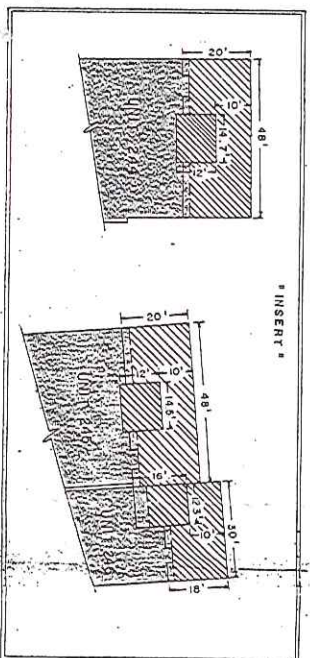
MARCH 18, 1993

ROBERT E. OSWALD, INC.  
REGISTERED LAND SURVEYOR

NEW ORLEANS, LA.  
SURVEYED & CERTIFIED CORRECT  
TO SHOW LOCATION OF UNITS 264 THROUGH 262

SEPTEMBER 13, 1982

ROBERT E. OSWALD, INC.  
REGISTERED LAND SURVEYOR



Public Act 487 of 1978  
Registration, as amended  
4181T A-2

C.M.# 489  
Inst.# 781991  
C.M.# 489  
Inst.# 781991