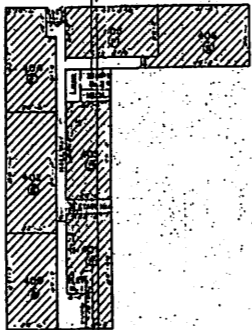
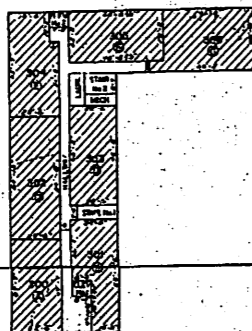


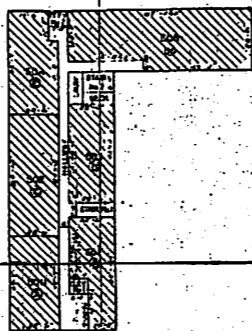
SECOND LEVEL
SCALE 1"=30'



FOURTH LEVEL
SCALE 1"=30'



THIRD LEVEL
SCALE 1"=30'



FIFTH LEVEL
SCALE 1"=30'

UNIT	APPROX. AREA
A	1028 Sq. Ft.
B	1028 Sq. Ft.
C-1	1234 Sq. Ft.
C-2	1234 Sq. Ft.
D	1234 Sq. Ft.
E	1071 Sq. Ft.
F	1211 Sq. Ft.
G	2202 Sq. Ft.
H	2202 Sq. Ft.
LAUN. RM.	338 Sq. Ft.
MECH. RM.	230 Sq. Ft.
WALL	3863 Sq. Ft.
STAIR-1	481 Sq. Ft.
STAIR-2	583 Sq. Ft.
ELEV.-1	187 Sq. Ft.
ELEV.-2	222 Sq. Ft.

DEDICATION: THE STREETS AND RIGHTS OF WAY SHOWN HEREON, IF NOT PREVIOUSLY DEDICATED, ARE HEREBY DEDICATED TO THE PERPETUAL USE OF THE PUBLIC. ALL AREAS SHOWN AS SERVICED ARE GRANTED TO THE PUBLIC FOR USE OF UTILITIES, DRAINAGE, STORM REMOVAL OR OTHER PROPERTY PURPOSES FOR THE GENERAL USE OF THE PUBLIC. NO BUILDING STRUCTURE OR FENCE SHALL BE CONSTRUCTED, NOR SHRUBBERY PLANTED WITHIN THE LIMITS OF ANY SERVICED SO AS TO PREVENT OR UNREASONABLY INTERFERE WITH ANY PURPOSE FOR WHICH THE SERVICED IS GRANTED.

SEWERAGE: NO PERSON SHALL PROVIDE OR INSTALL METHOD OF SEWAGE DISPOSAL OTHER THAN CONNECTION TO AN APPROVED SANITARY SEWER SYSTEM UNLESS THE METHOD OF SEWAGE TREATMENT DISPOSAL HAS BEEN APPROVED BY THE ORLEANS PARISH HEALTH UNIT.

Thomas A. Brown June 14, 1978
THOMAS A. BROWN, PRESIDENT
TAD PROPERTIES LIMITED, INC.

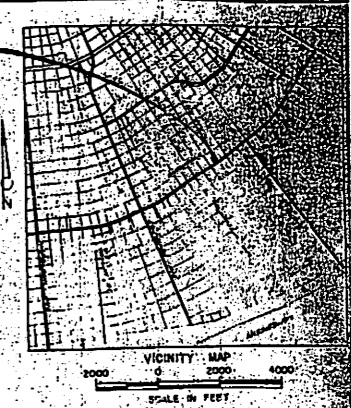
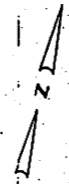
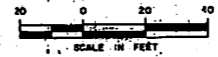
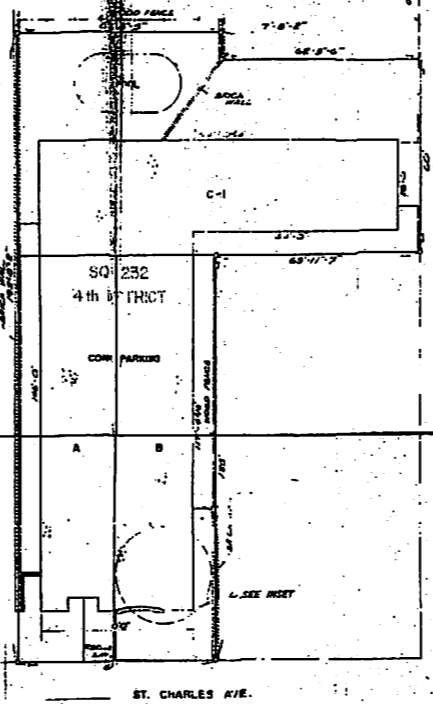
RESTRICTIONS:
ALL "CONDOMINIUMS" ARE SUBJECT TO "CONDOMINIUM DECLARATION" THE GALLERY CONDOMINIUMS, A CONDOMINIUM FILED AS AN ADJUNCT HERETO.

DEDICATION OF COMMON PROPERTIES:
THOSE AREAS IN THE GALLERY CONDOMINIUMS DESIGNATED AS "PRIVATELY OWNED CONDOMINIUMS," "COMMON BUT LIMITED ACCESS" RESERVED OR RESTRICTED FOR OTHER USES ARE HEREBY DEDICATED BY TAD PROPERTIES LIMITED, INC. AS "COMMON PROPERTIES" AND ARE DEVOTED TO THE COMMON USE AND ENJOYMENT OF THE CONDOMINIUM OWNERS OF THE GALLERY CONDOMINIUMS. THE CARE, UPKEEP, AND MAINTENANCE OF THESE "COMMON PROPERTIES" IS NOT THE RESPONSIBILITY OF THE CITY-PARISH GOVERNMENT OF ORLEANS PARISH, BUT SHALL BE THE RESPONSIBILITY OF THE GALLERY CONDOMINIUM ASSOCIATION, IN ACCORDANCE WITH THE PROVISIONS OF THE "CONDOMINIUM DECLARATION" THE GALLERY CONDOMINIUMS INCORPORATED BY REFERENCE AND MADE A PART OF THIS PLAT. "COMMON PROPERTIES" ARE NOT DEDICATED HEREBY FOR USE BY THE GENERAL PUBLIC.

Thomas A. Brown June 14, 1978
THOMAS A. BROWN, PRESIDENT
TAD PROPERTIES LIMITED, INC.

THIS PLAT IS MADE PURSUANT TO APPLICABLE LAWS OF LOUISIANA REVISED STATUTES, TITLE 9, SECTION 1221 THRU 1240 AS RELATED TO CONDOMINIUMS. THE CURVES OF LAND WITH BEARINGS/LENGTHS SHOWN HEREON WERE ACTUALLY MADE ON THE GROUND PER RECORD DESCRIPTION.
Edward E. Evans 9-22-78
EDWARD E. EVANS & ASSOCIATES, INC.
CONSULTING ENGINEERS

INDICATES PRIVATELY OWNED CONDOMINIUMS
 INDICATES "COMMON PROPERTY"



FINAL PLAT
OF
THE GALLERY CONDOMINIUMS
LOCATED IN SECTION 13, T-15-S, R-11-E, SOUTHEAST
LAND DISTRICT, EAST OF THE MISSISSIPPI RIVER,
PARISH OF ORLEANS, LOUISIANA
FOR
TAD PROPERTIES LIMITED, INC.

EDWARD E. EVANS & ASSOCIATES, INC.
CONSULTING ENGINEERS • BATON ROUGE, LA.