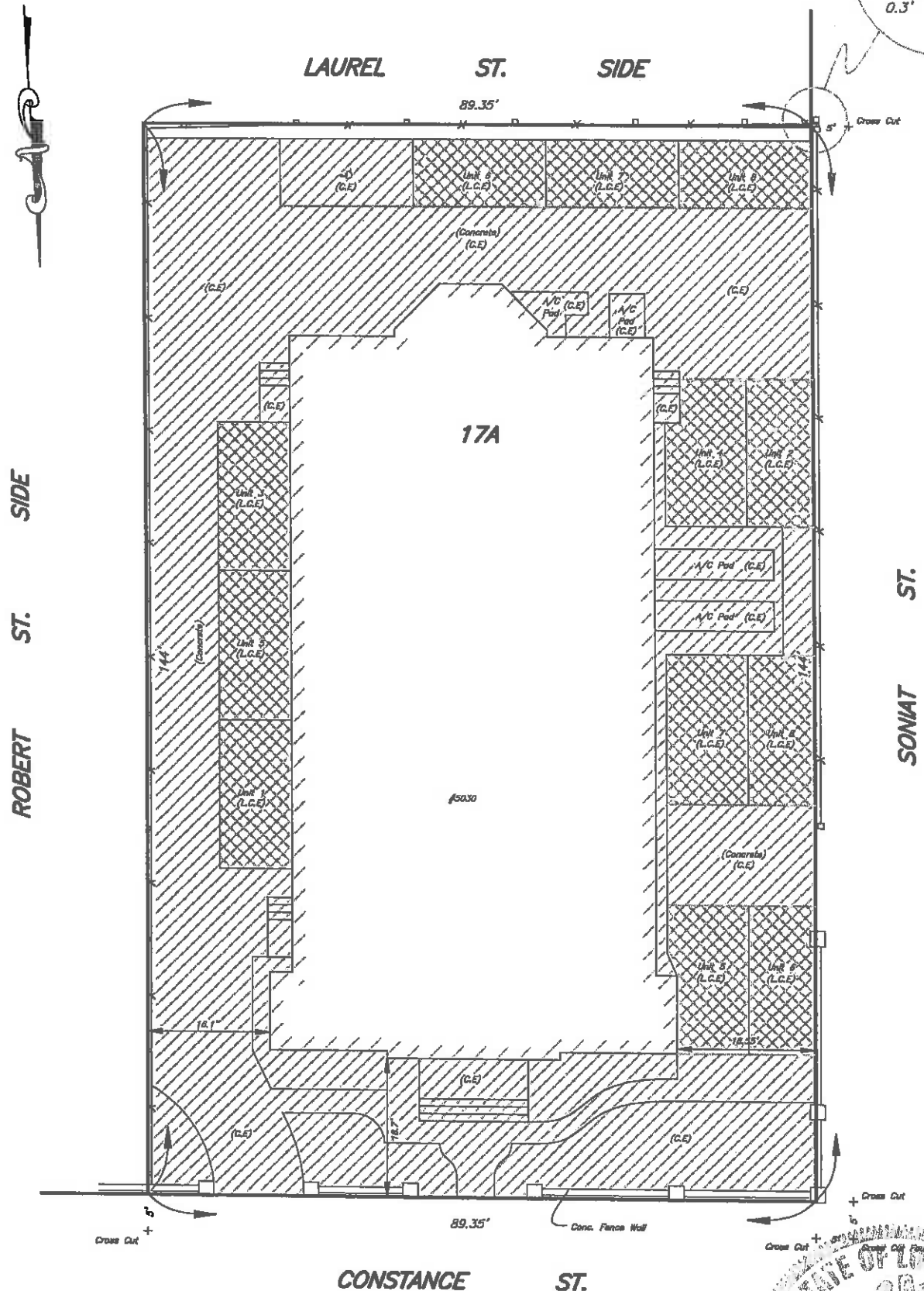
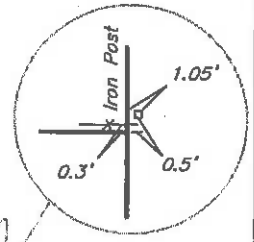


SQ. NO. 181, AVART
SIXTH DISTRICT

ORLEANS PARISH
NEW ORLEANS, LA

"5030 CONSTANCE STREET CONDOMINIUMS"



ROBERT ST. SIDE

LAUREL ST. SIDE

SONIAT ST.

CONSTANCE ST.

Notes

- Unit - [Hatched Pattern]
- C.E. - Common Element [Diagonal Hatched Pattern]
- L.C.E. - Limited Common Element [Cross-hatched Pattern]

THE SERVITUDES SHOWN ON THIS PLAT ARE LIMITED TO THOSE FURNISHED TO US. THERE IS NO REPRESENTATION THAT ALL APPLICABLE SERVITUDES ARE SHOWN HEREON. THE SURVEYOR HAS MADE NO TITLE SEARCH OR PUBLIC RECORD SEARCH IN COMPILING DATA FOR THIS SURVEY.

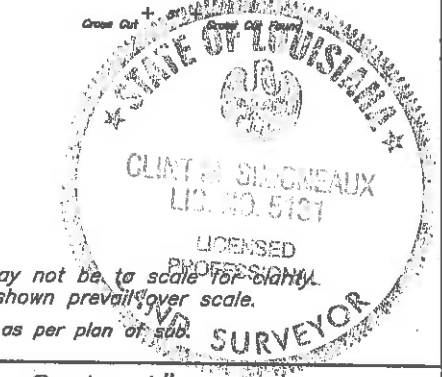
Note: Improvements may not be to scale for clarity. The dimensions shown prevail over scale. All lot angles 90° as per plan of sub.

Date: February 10, 2017

Scale: 1" = 20'

This plat represents an actual ground survey made by me or under my direct supervision and control and meets the requirements for the Standards of Practice for Boundary Surveys as found in Louisiana Administrative Code Chapter 25 for a Class "C" survey. Made at the request of Valmont Investments.

Gilbert, Kelly & Couturie, Inc., Professional Land Surveying
2121 N. Causeway Blvd., Metairie LA 70001 (504) 836-2121

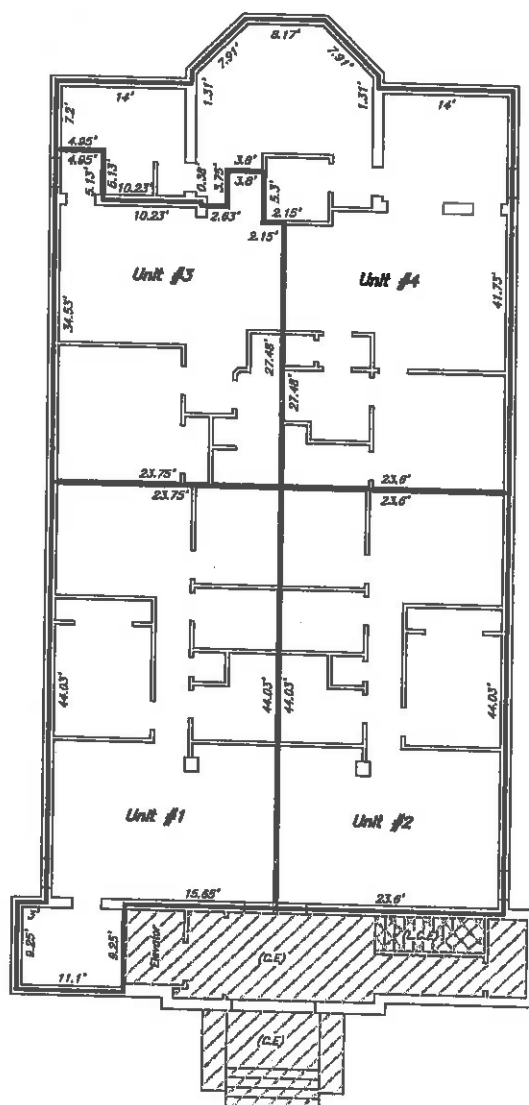


Clint Simeaux

SQ. NO. 181, AVART
SIXTH DISTRICT

ORLEANS PARISH
NEW ORLEANS, LA




"5030 CONSTANCE STREET CONDOMINIUMS"



First Floor



Note:
Improvements may not be to scale for clarity.
The dimensions shown prevail over scale.

Notes
Unit - 
C.E. - Common Element 
L.C.E. - Limited Common Element 

Date: February 10, 2017

Scale: 1" = 20'

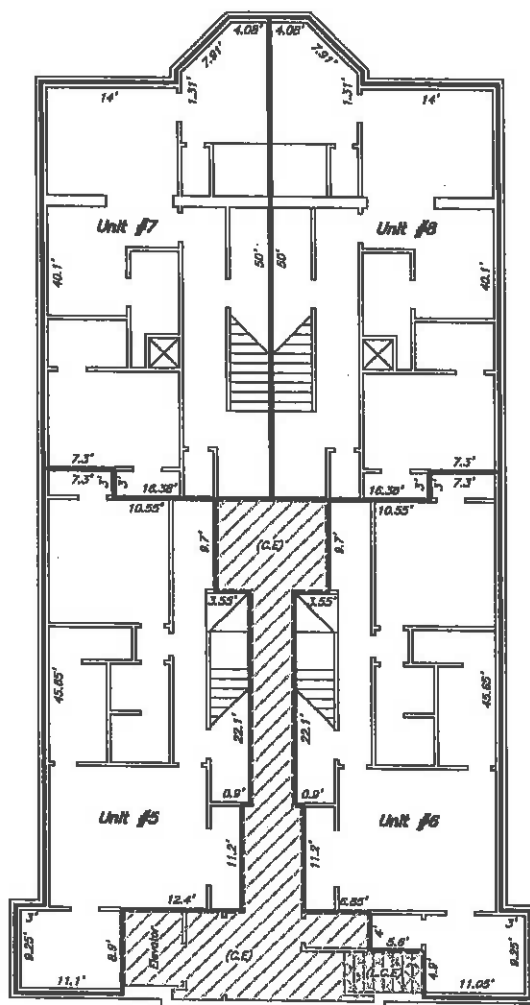
Gilbert, Kelly & Couturie, Inc., Professional Land Surveying
2121 N. Causeway Blvd., Metairie LA 70001 (504) 836-2121

Clint Simoneaux

SQ. NO. 181, AVART
SIXTH DISTRICT

ORLEANS PARISH
NEW ORLEANS, LA


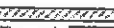

"5030 CONSTANCE STREET CONDOMINIUMS"



Second Floor



Note:
Improvements may not be to scale for clarity.
The dimensions shown prevail over scale.

Notes
Unit - 
C.E. - Common Element 
L.C.E. - Limited Common Element 

Date: February 10, 2017

Scale: 1" = 20'

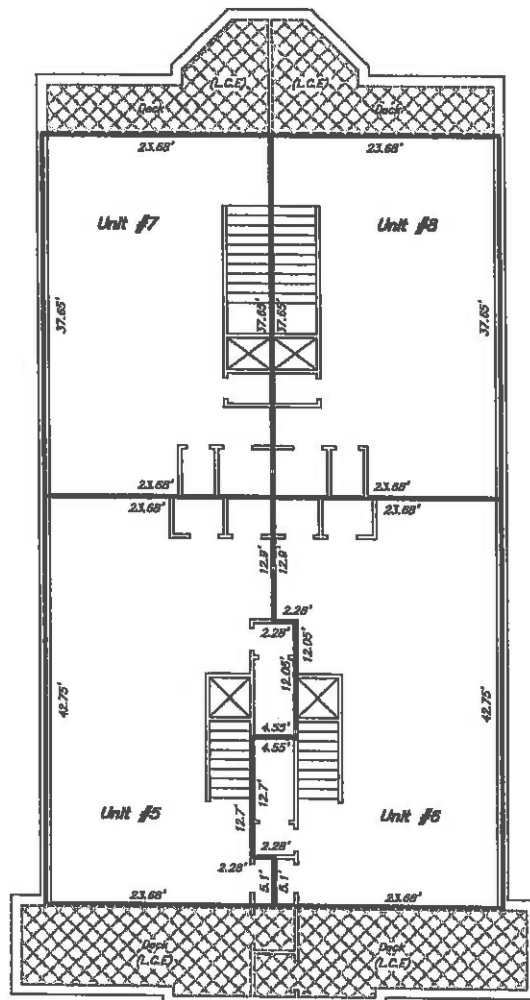
Gilbert, Kelly & Couturie, Inc., Professional Land Surveying
2121 N. Causeway Blvd., Metairie LA 70001 (504) 836-2121

Clint Simoneaux

SQ. NO. 181, AVART
SIXTH DISTRICT

ORLEANS PARISH
NEW ORLEANS, LA




"5030 CONSTANCE STREET CONDOMINIUMS"



Third Floor



Note:
Improvements may not be to scale for clarity.
The dimensions shown prevail over scale.

Notes
Unit - 
C.E. - Common Element 
L.C.E. - Limited Common Element 

Date: February 10, 2017

Scale: 1" = 20'

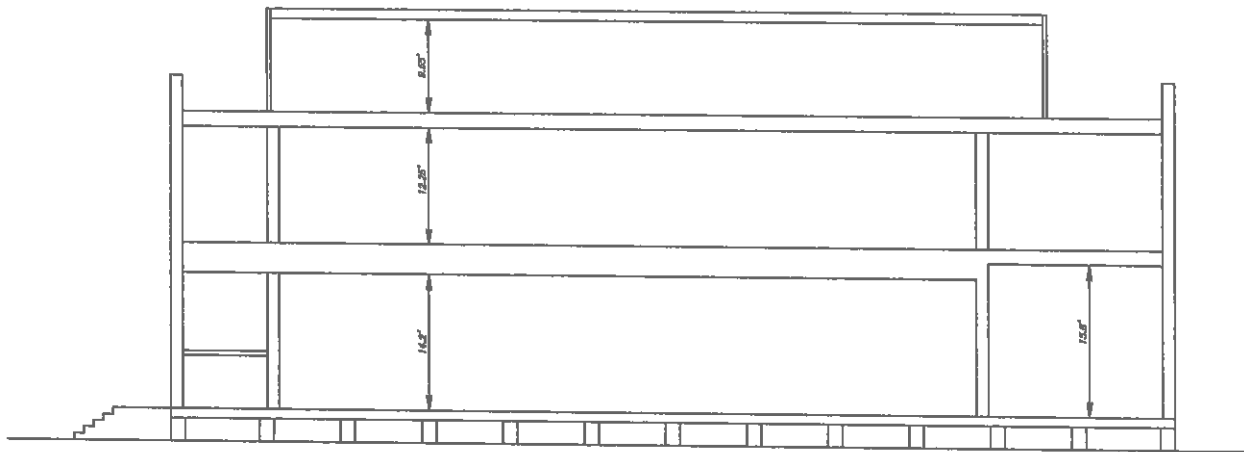
Gilbert, Kelly & Couturie, Inc., Professional Land Surveying
2121 N. Causeway Blvd., Metairie LA 70001 (504) 836-2121

Clint Simoneaux

SQ. NO. 181, AVART
SIXTH DISTRICT

ORLEANS PARISH
NEW ORLEANS, LA

"5030 CONSTANCE STREET CONDOMINIUMS"



Horizontal Elevation



Square Footages:		
Unit #1	1,148.27 Sq. Ft.	9.42%
Unit #2	1,038.80 Sq. Ft.	8.52%
Unit #3	751.32 Sq. Ft.	6.00%
Unit #4	1,346.62 Sq. Ft.	11.05%
Unit #5	2,008.06 Sq. Ft.	16.48%
Unit #6	2,032.87 Sq. Ft.	16.67%
Unit #7	1,946.88 Sq. Ft.	15.83%
Unit #8	1,940.88 Sq. Ft.	15.83%

Note:
Improvements may not be to scale for clarity.
The dimensions shown prevail over scale.

Date: February 10, 2017

Scale: 1" = 20'

Gilbert, Kelly & Couturie, Inc., Professional Land Surveying
2121 N. Causeway Blvd., Metairie LA 70001 (504) 836-2121

Clint Simoneaux